



lithgow region landcare news

In This Issue:

Autumn/Winter 2009

From the Community Support Officer...

Peter Evans

Welcome to the Autumn/Winter edition of the Lithgow region Landcare news. The warm days of spring and summer have come and gone and the cool nights are indicating that winter is on its way.

Plantings from last season appear to have survived the dry and hot start to the year thanks to the good rains from mid February.

Various Landcare groups have been quite active over the spring and summer in particular the Lithgow Green Corps team that commenced in early December have been kept busy.

The results from the Bi annual survey have been collected and collated and the results are quite impressive. More on the results will be published later in this edition.

Update from the Regional Landcare Facilitator ...

Even though we are already well into 2009, can I wish you another successful year of landcaring.

During 2008 we conducted one of our

regular surveys of Landcare throughout the Hawkesbury Nepean catchment. We found the contribution being made to our catchment by individuals and Landcare/Community groups continues to be very significant. 125 Landcare groups and many more Bushcare groups contributed over 70,000 hours which is valued at \$2.1 Million and these groups attracted funding of \$1.1 Million. A huge contribution indeed!

2009 sees us gearing up to recognise another group of outstanding landcarers, firstly in our regional Hawkesbury-Nepean Landcare Awards and then in September at the NSW Landcare Awards. Our region has had considerable success at these awards over the years and hopefully will continue this year.

Please consider nominating an individual, landholder or group for these awards. More information about this and assistance with nominations is available from Peter Evans.

We will present the regional awards at our second Hawkesbury-Nepean Landcare Forum which will be held at Mt Annan Botanic Gardens again, on Fri 19 June 2009. Our first catchment wide forum in 2007 was well attended and enjoyed by those that came, so please consider coming along in June.

Geoff O'Connor
Regional Landcare Facilitator

- CSO Update
- Around the groups
- Landcare Surveys
- Whats on
- Training
- Funding

2009 Hawkesbury- Nepean Landcare Forum ...

**Presentation of 2009 Hawkesbury
Nepean Landcare Awards will take
place on**

Friday 19 June 2009

At

Mt Annan Botanic Gardens

Guest Speakers

Tours of the Gardens

Lunch and refreshments

Free Entry

**Further information Contact Peter
Evans 6350 3111**



Around the Groups

Vale of Clywdd Landcare Group

The Vale of Clywdd Landcare group have again been active within their area. The group is working on a stretch of the Vale Creek behind the Vale of Clywdd Hall.

The group has achieved great results in the area. Green Corps has helped them to establish a number of native plants in the riparian area. The group have been involved in mulching the plants and general weeding.

The Landcare group has also been successful in lobbying Lithgow council to provide new play equipment for the park adjacent to the creek where they have been working. Due to the work that the group has been undertaking the park is a much more pleasant place.



Members of the Vale of Clywdd Landcare group receiving their Sony Camera.

The Vale of Clywdd Landcare group were recently the winners of a new digital camera supplied by Sony. The group were one of the numerous Landcare groups within the Hawkesbury-Nepean catchment to return their bi-annual survey. The group was selected at random from all groups within the catchment.

Lithgow and Districts Landcare Group

TAFE Outdoor Recreation Students
Three energetic groups of students have been hosted by the Lithgow and

Districts Landcare group to undertake revegetation and weeding in the riparian zone of Farmers creek in Inch St.

The Students have been involved in a 10 day out door recreation program undertaking a range of activities including kayaking, camping and white water rafting. The environmental activities give the students an opportunity to understand and become more aware of their environment and to assist in reducing their carbon footprint of their 10 day activities.



Work undertaken by the Outdoor Recreation Students

Lithgow Oberon Landcare Association (LOLA).

The Lithgow Oberon Landcare Association (LOLA) hosted a very successful schools week of action at Lake Wallace—Wallerawang. 200 Students from Mt Victoria, Zig Zag and Wallerawang Public Schools participated in the 3 day event.

Students participated in tree planting and bug watch activities. The students were also involved in guarding and watering the plants.

Over 1500 plants have been planted at the site, of which most are doing well.

The next week of action is currently being planned for the 16th-19th March. Anyone interested in assisting on any of the days please contact Peter Evans



Students in Action at Lake Wallace.

Capertee Valley Catchment Group

There has been a number of activities held in the Capertee Valley. The group held 2 quarterly meetings with a range of speakers including Centennial Coal , DPI & National Parks.

A salinity and Blue Heliotrope workshop was also held in December attracting over 35 participants. The field day looked at the effect that the biological control beetle is having on the weed blue heliotrope and also looking at Salinity in relation to recharge and discharge areas and the geology of why this is occurring in particular areas.



Lithgow Community Nursery News

Staff and volunteers at the Lithgow community nursery have been busy growing out a large number of native plants for planting in the next few months.

The nursery is open to the public for sales on Monday and Fridays. The Lithgow Community Nursery is located in Coalbrook St. For information regarding available plants phone 6353 1126

What's on

Pussy Willow Workshop— Date TBA

A workshop to assist people identify Pussy Willow and show control techniques. Contact Peter Evans



Pest Animal Control Workshop— Date TBA

A workshop will be held in the Kanimbla Valley in conjunction with the Livestock Health Pest Authority (the old RLPB) showing methods of pest animal control and harbour destruction. Contact Peter Evans

Schools Week of Action— 16-19 March

Schools will be undertaking planting and water monitoring activities at Lake Wallace between 10am and 2pm. Anyone that can volunteer their time for this event for a few hours please Contact Peter Evans

Capertee Valley Catchment Group Meeting— Tuesday 10th March

Speakers from various agencies will deliver information to the meeting, followed by a BBQ lunch. Contact Peter Evans

Hot Spots Workshop— Tuesday 24th March

A workshop on fire management incorporating protecting lives/assets and native veg/animals will be held at Glen Alice Contact Peter Evans

Bell Dargan Clarence Landcare Group— Browns Swamp Workshop—Saturday 28th March

A workshop will be held at Zig Zag Railway to tackle weeds entering Browns Swamp. Training and tools will be supplied. Contact Peter Evans or Michael Hensen 4780 5474

Jenolan Caves Sycamore Weekend—2nd/3rd May

Become involved in the fight against sycamores at Jenolan Caves. Accommodation, tools and training is provided. Contact Trish Kidd. 0423 527 740 tkidd@bmcc.nsw.gov.au or patricia.kidd@bigpond.com

Dung Beetle Workshops - Dates TBA

Workshops scheduled for late last year have had to be rescheduled. At this stage the workshops will be held in May in Hartley and Capertee. Contact Peter Evans

If you have a relevant event that you would like assistance promoting please contact Peter Evans 6350 3111 or

peter.evans@cma.nsw.gov.au

Activities and opportunities to look out for

Reducing our paper usage.

If you have received this newsletter in a paper format and would like to receive it electronically please email me at peter.evans@cma.nsw.gov.au. The newsletter will be emailed to you in a PDF format as well as a link that you can access from the HNCMA website.

I am also able to email you with relevant activities and events that may be in your area. I am conscious not to bombard you with a huge number of emails with large attachments.

HNCMA website

Have you checked out the Hawkesbury Nepean CMA website?

www.hn.cma.nsw.gov.au

Bell Dargan Clarence Landcare Group -

Browns Swamp Weed Workshop

Bell Dargan Clarence Landcare Group has reformed after a number of years on the sidelines and has a new focus and invites you to become involved!

The groups current focus is on Browns Swamp, protecting endangered Newnes Plateau Shrub Swamp EEC. Browns Swamp is located at the entrance to the historic Zig Zag Railway. The group is organising a work day to undertake weed control on the fringe of the swamp and other bush regeneration activities. Qualified bush regenerators will be available on the day to provide training and support.

No knowledge or skills required, just a keen interest in protecting the environment.

Contact Peter Evans 6350 3111
Michael Hensen 4780 5471

Jenolan Caves Weed Weekend

Landcare is running a series of weed control weekends focusing on the identification and control of Sycamore, a significant weed in the Jenolan Caves Reserve. A successful weekend was held at Jenolan Caves in November last year and a repeat weekend is planned for May this year. Training will be provided no experience is necessary but be prepared for some physical work.

Dates: 2/3 May 2009

Keep your eye out for the notices. If you would like more information regarding this proposed weekend please contact Trish Kidd 0423 527 740.

2009 Hawkesbury-Nepean Landcare Awards

It's time again to recognise some of our outstanding Landcarers. We will be calling for nominations for these awards during March & April.

Please consider nominating an Individual, Landholder or Landcare/Community Group in the following categories:

- **Individual Landcarer Award**
- **Landcare Community Group Award**
- **Landcare Primary Producer Award**
- **Landcare Education Award**
- **Landcare Indigenous Award**

Plus 2 new categories

- **Young Landcare Leader**
- **Urban Landcare**

Winners in each category will become the Hawkesbury-Nepean nominations for the NSW Landcare Awards which will be presented at the NSW Landcare Forum to be held in September at Port Macquarie.

More information on the categories and entry forms will be sent to all Landcare Groups shortly. Please contact Peter Evans

Contributions for the Newsletter

If you have items that you wish to share I am more than happy to include them in the newsletter. Phone or email me and I will do my best to include your article, notice or story.

CMA Funding River Health Project

This project helps landholders protect and restore creek and river banks throughout the Hawkesbury Nepean catchment.

Landholders can apply for grants up to \$20,000 to:

- Control invasive weeds (including willows) along waterways
- Plant local native species to improve vegetation links and biodiversity
- Fence creek and river banks to protect native vegetation
- Provide off-river stock watering systems

Bushland Conservation Project

The project offers funding to landholders within the rural local government areas of the Hawkesbury Nepean catchment. The Bushland Conservation Project offers funding to landholders to:

- Fence remnant (original) native vegetation to protect it from stock
- Plant local native trees and shrubs to connect or improve remnant vegetation
- Control weeds in remnant vegetation

As part of the project, a free site visit is undertaken by a CMA officer and a site report is prepared.

Wetlands Management Program

This project aims to restore and protect wetlands on private property as well as Wetlands of National Importance in the catchment.

Funding on landholder properties in the Hawkesbury Nepean will target floodplain wetlands, peat swamps and isolated mountain swamps.

Funding is available to landholders to:

- Fence wetlands to restrict stock access
- Install alternative stock watering systems, such as pumps, pipes and troughs
- Carry out bush regeneration
- Replant wetland species if necessary

- Carry out approved remedial works to recreate wetland function.

The CMA's Wetland Project Officer is available to visit properties and provide advice on how best to conserve or rehabilitate wetlands

Funds from other sources

Australia Post Community Development Grant

Community groups can apply for yearly grants of up to \$3,300 (including GST) to help improve their local community and environment, through the Australia Post Landcare Community Development Grant.

<http://www.landcareonline.com.au>

Sydney Catchment Authority Incentives Programs

Catchment Protection and Improvement Grants. Grants for community groups of up to \$8,000 (plus \$2,000 for equipment hire) available for protecting and improving water quality through riparian and environmental restoration and for educating catchment communities about protecting catchments and water quality. Riparian Management and Assistance Programs. Assistance for property owners to protect and conserve riparian zones along the following creeks and associated streams and gullies: Upper Werriberri Creek, Brogers Creek, Barrengarry Creek, Paddy's River, Uringalla Creek, Long Swamp Creek, Cullenbenbong Creek, Ganbenang Creek, Galong Creek, Coxs River (from Kanimbla Valley to Blue Mountains National Park Boundary). Check website for details on dates.

<http://www.sca.nsw.gov.au/catchments/funding.html>

Woolworths Sustainable Farming Program

Grants of \$5,500 are now available to Australian farmers for projects to develop, improve and encourage sustainable farming practices.

<http://www.landcareonline.com.au>

Farm Ready

Training is available for farmers to undertake study and attend short courses up to an amount of \$1500 per year for accredited courses.

Courses which assist landholders to adapt to climate change will be approved. See website for more details and accredited courses.

www.daff.gov.au/farmingfuture

Landcare Australia Limited Funding

Junior Landcare Grants Program

VISY Junior Landcare Recycling Grants

Australia Post Junior Landcare Biodiversity Grant

Coles Junior Landcare School Garden Grant (4 times per year- value of \$500 to \$1000)

Check website for more details

<http://www.landcareonline.com.au>

Landcare in the Hawkesbury-Nepean Catchment in 2008

Survey Summary

The Value of Landcare to environmental restoration work has topped more than \$3.3 million

The Hawkesbury-Nepean CMA surveyed Landcare and other community groups in September 2008.

Currently there are 125 active Landcare groups in the Hawkesbury-Nepean catchment working on project sites across the catchment and contributing to the rehabilitation and revegetation of bushland, waterways and coastal environments.

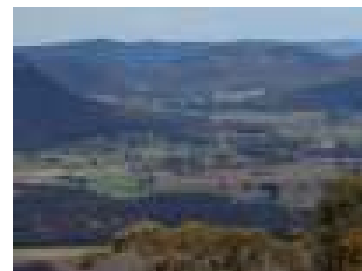
The survey shows 33 new groups have formed in the last two years, however, 18 groups have finished their projects, disbanded or decided to take a break for a while. So while some groups move on, new ones step in to take their place introducing new projects, new skills and new enthusiasm.

There are 2,705 Landcare members who have contributed 70,000 hours of voluntary labour in 2008 which is worth over \$2.1 million. In addition Landcare attracted funding of more than \$1.1 million from local, state and federal governments and other organisations bringing the overall value of Landcare's environmental restoration work to over \$3.3 million. This is an increase of nearly \$1 million since 2006.

Landcare in the Hawkesbury-Nepean	2006 survey	2008 survey
Number of active Landcare groups	110	125
Number of Landcare members	c. 2752	c. 2705
Number of hours worked by Landcare members	68,487	71,608
Value of volunteer in-kind contribution	\$1,369,742 (volunteer labour valued @ \$20/hour)	\$2,148,231 (volunteer labour valued @ \$30/hour)
Value of funding for Landcare activities	\$1,009,961	\$1,180,564
Total value of Landcare to community	\$2,379,703	\$3,328,795

Table 1: The value of Landcare in the Hawkesbury-Nepean in 2006 and 2008

The Hawkesbury-Nepean CMA continues to work alongside Landcare groups providing support, advice, encouragement and help. Congratulations and thank you to the Landcare community, you inspire hope for a healthy environmental future.



Note that Australian government standards increased the value of volunteer contributions from \$20 per hour in 2006 to \$30 per hour in 2008.