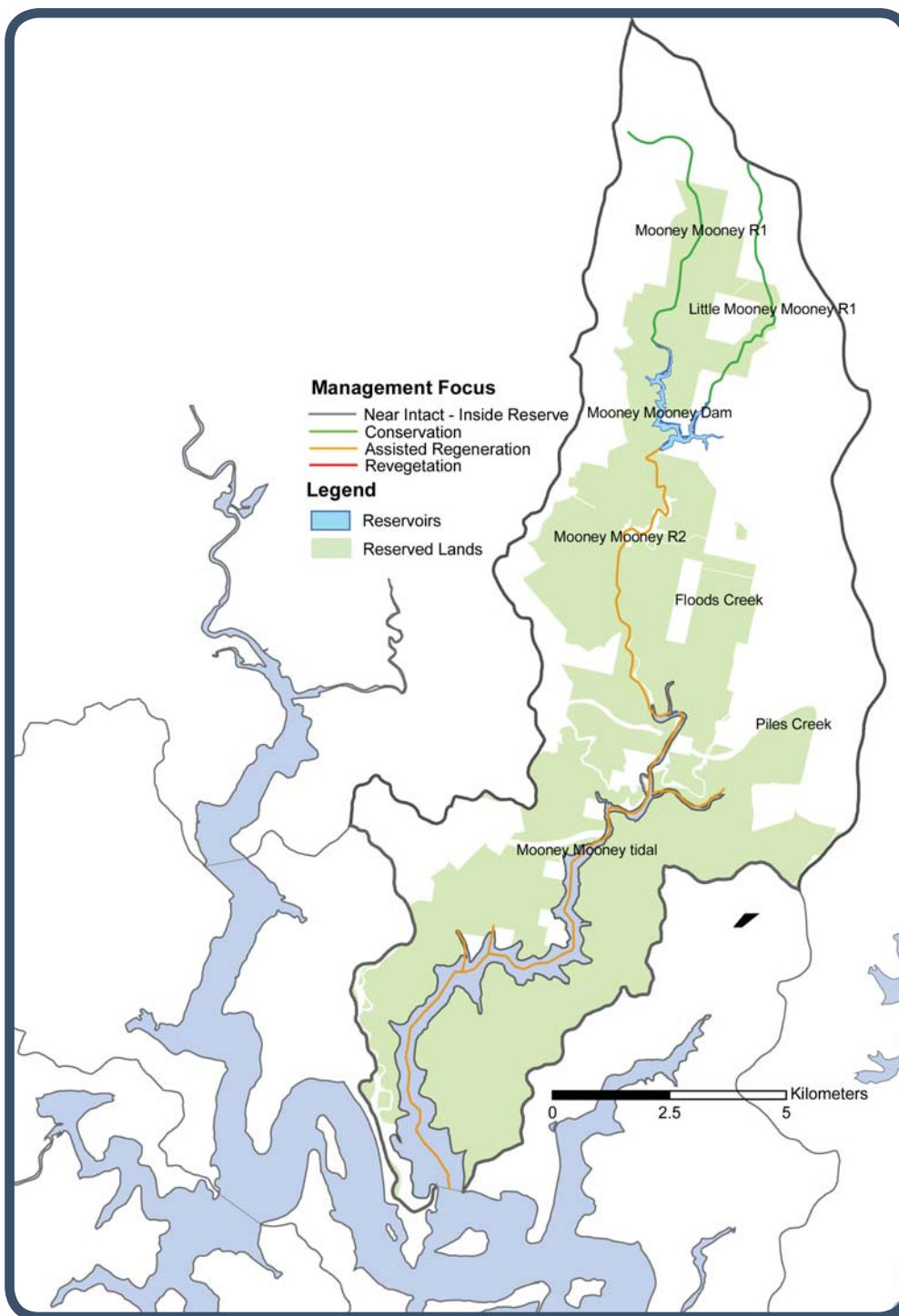


## Mooney Mooney Creek Subcatchment



The Mooney Mooney Creek subcatchment enters the Hawkesbury Estuary from the north. The subcatchment is dominated by bushland. Brisbane Water National Park is located in the lower reaches of Mooney Mooney Creek while the upper reaches are impacted by agricultural and peri-urban development, and some urban development which is restricted to Kariong to the east.

The Mooney Mooney Dam provides water supply to Gosford. Groundwater is extracted from the headwaters of Mooney Mooney Creek (Mooney Mooney R1). The industrial area at Somersby drains into Piles Creek causing water quality issues. Furthermore, Piles Creek and the tidal reach of Mooney Mooney Creek have occurrences of bank erosion. There is some inappropriate foreshore usage in areas of the tidal section of Mooney Mooney Creek causing damage to mangrove vegetation.

## Reach Management Recommendations – Mooney Mooney Creek Subcatchment

Reach Name	Reach Description	Riparian Land Management Category	Reach Values	Reach Threats	Reach management recommendations (Planning, Education, Works, Monitoring, Institutional)
Mooney Mooney R1	From south of Mangrove Mountain to dam	Conservation	<ul style="list-style-type: none"> <li>• Good riparian vegetation</li> <li>• Brisbane Water National Park</li> <li>• Good river condition</li> <li>• High geomorphic recovery potential</li> <li>• Identified flagship species (National Park)</li> <li>• Popular recreational fishing</li> <li>• Some community based environment activity (Streamwatch)</li> </ul>	<ul style="list-style-type: none"> <li>• Modified / engineered channel (some minor piping and causeways)</li> <li>• Barriers to ecosystem functioning</li> <li>• Flow extraction</li> </ul>	<ul style="list-style-type: none"> <li>• Develop conservation management agreements to protect remnant riparian vegetation (P)</li> <li>• Aquatic habitat condition and connectivity improvement – barriers to fish passage (I,W)</li> <li>• Increase community capacity for environmental restoration (E)</li> <li>• Water management – quantity (I)</li> </ul> <p>Part of reach in reserved lands.</p>
Mooney Mooney R2	Gorge downstream of Mooney Mooney dam wall to beginning of tidal reach	Assisted Regeneration	<ul style="list-style-type: none"> <li>• Good riparian vegetation</li> <li>• Brisbane Waters National Park</li> <li>• Popular recreational fishing</li> <li>• Identified flagship species (Playtpus; Quoll)</li> </ul>	<ul style="list-style-type: none"> <li>• Modified / engineered channel (small decommissioned dam)</li> <li>• Barriers to ecosystem functioning</li> <li>• Flow regulation</li> <li>• Flow extraction</li> </ul>	<ul style="list-style-type: none"> <li>• Aquatic habitat condition and connectivity improvement (P,W)</li> <li>• Water quantity / flow management (I)</li> <li>• Increase community capacity for environmental restoration (E)</li> </ul>
Mooney Tidal	From gorge to Mooney Mooney Point, NOT including Spectacle Island & Cogra Bay	Assisted Regeneration	<ul style="list-style-type: none"> <li>• Good riparian vegetation</li> <li>• Wetland of regional or state significance (saltmarsh)</li> <li>• Brisbane Waters National Park</li> <li>• Popular recreational fishing</li> <li>• Popular motor boating</li> <li>• Popular non-motor boating</li> <li>• Popular swimming</li> <li>• Identified flagship species (Oyster)</li> <li>• Commercial fishing</li> <li>• Some community based environment activity (Bushcare)</li> </ul>	<ul style="list-style-type: none"> <li>• Modified / engineered channel (seawalls, road fill, boat ramps)</li> <li>• Damaging access (human damage to mangroves – boat ramps and foreshore development)</li> <li>• Flow regulation</li> <li>• Water quality</li> <li>• Potential water quality degradation from septics at Mooney</li> </ul> <p>Action Triggers</p> <ul style="list-style-type: none"> <li>• Severe immediate threat (QX disease in Oysters)</li> </ul>	<ul style="list-style-type: none"> <li>• Manage human access at public and private recreation river access points and along foreshores (E,W)</li> <li>• Riparian wetland management</li> <li>• Water quality / nutrient management (I)</li> <li>• Maintenance of recreational values (M)</li> <li>• Increase community capacity for environmental restoration (E)</li> </ul>
Little Mooney R1	Whole length from Wisemans Ferry Rd at “Warrumbungle” to reservoir water body. Divides into 2 zones with upstream zone in the urban area.	Conservation	<ul style="list-style-type: none"> <li>• Good riparian vegetation cover</li> <li>• Brisbane Waters National Park</li> <li>• Good river condition</li> <li>• High geomorphic recovery potential</li> <li>• Identified flagship species (Gymea Lilly and threatened Mintbush species on Somersby Plateau)</li> </ul>	<ul style="list-style-type: none"> <li>• Modified / engineered channel (some small causeways and pipes)</li> <li>• Barriers to ecosystem functioning</li> </ul>	<ul style="list-style-type: none"> <li>• Develop conservation management agreements to protect remnant riparian vegetation (P)</li> <li>• Aquatic habitat condition and connectivity improvement – barriers to fish passage (I,W)</li> <li>• Increase community capacity for environmental restoration (E)</li> </ul>