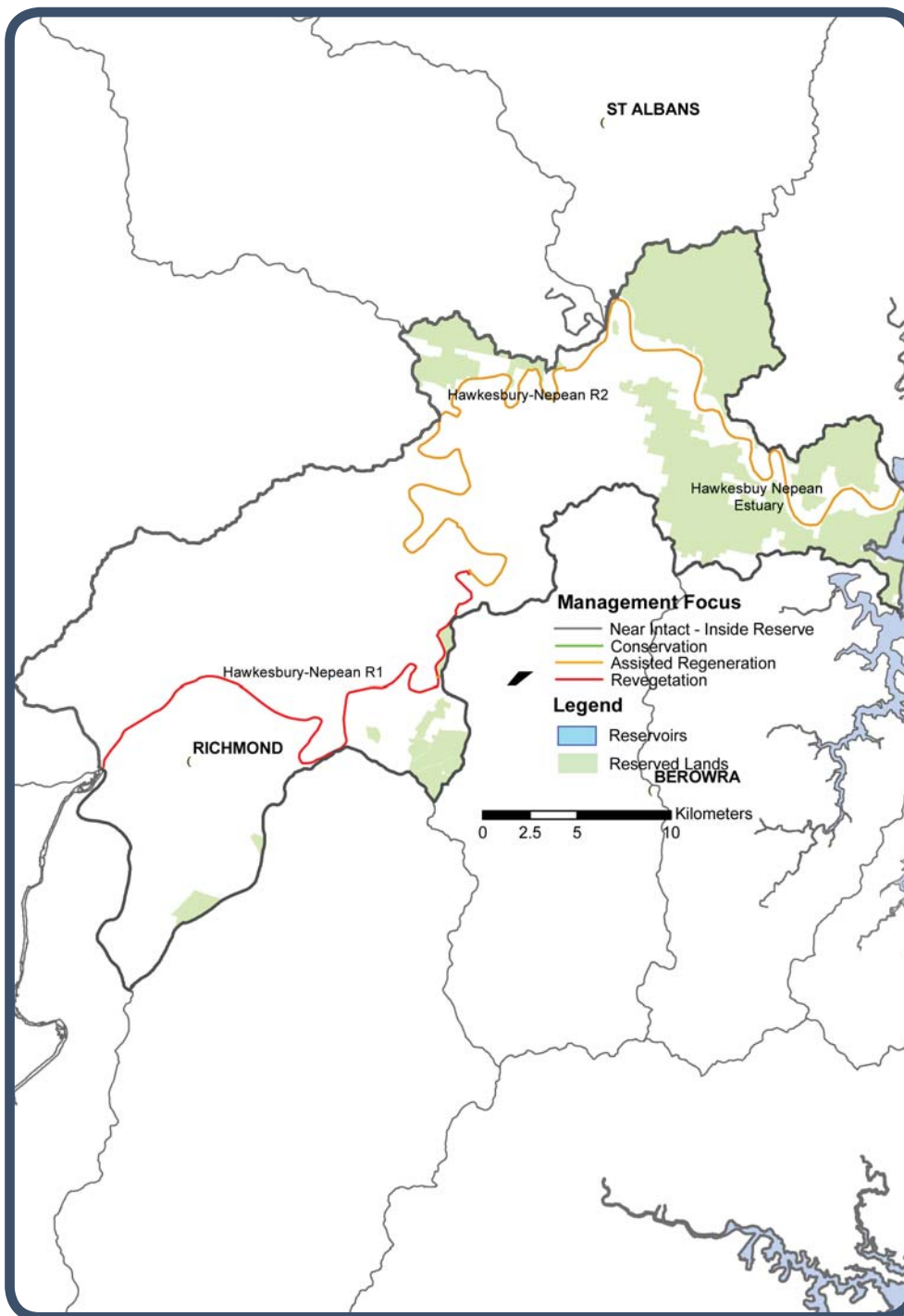


Hawkesbury River Subcatchment (freshwater)



The Hawkesbury River subcatchment lies on the agricultural and peri-urban fringe of urbanized North Western Sydney. The subcatchment extends from the Nepean River confluence with the Grose River near Yarramundi to the lower estuary of the Hawkesbury River at Webbs Creek near Wiseman's Ferry. The tidal influence in the Hawkesbury River extends into this subcatchment, reaching approximately 145km upstream from Broken Bay.

The Hawkesbury River in this location is under severe threat from a multitude of land use impacts. The river receives drastically reduced flows due to extensive upstream impoundment for Sydney's drinking water. Licensed surface water extraction from this subcatchment is also high, supporting the most intensive and productive agricultural operations in the Sydney basin. The floodplains and riverbanks have been largely cleared for agriculture and recreational use, and riverbank erosion is a serious issue.

There are a number of major Sewerage Treatment Plants discharging into the Hawkesbury River subcatchment which impact on water quality and flow.

The Hawkesbury River has an extremely high social and economic value supporting significant agriculture, recreation and tourism industries in the subcatchment, and there is a very high level of community based environment activity.

Reach Management Recommendations – Hawkesbury River Subcatchment (freshwater)

Reach Name	Reach Description	Riparian Land Management Category	Reach Values	Reach Threats	Reach management recommendations (Planning, Education, Works, Monitoring, Institutional)
HN R1	From Grose River confluence to start of Upper Crescent Reach just past Port Erringhi.	Revegetation	<ul style="list-style-type: none"> Wetlands of National Significance (Longneck Lagoon; Pitt Town Lagoon) Wetlands of regional significance (SREP 20 wetlands) Significant vegetation community (Sydney Coastal River Flat Forest) Popular recreational fishing Popular motor boating Popular non motor boating Popular swimming High public recreation access Identified flagship species (Glossy Black Cockatoo; Australian Bass; Water Birds; Wedge Tailed Eagle) Significant irrigation water supply River based tourism is a major focus for regional economy Significant community based environment activity Town drinking water offtake point (North Richmond) 	<ul style="list-style-type: none"> Modified / engineered channel (localised bank protection works; flood levees) Very high woody weed invasion – also vines Frequent aquatic weed outbreaks (Salvinia; Water Hyacinth; <i>Egeria densa</i>; Ludwigia) Damaging access (stock and humans – extensive – serious erosion) Flow regulation Flow extraction Water quality (STP discharges, stormwater, agricultural runoff) <p>Action Triggers</p> <ul style="list-style-type: none"> Severe downstream impacts – water quality and weeds (aquatic and terrestrial) Severe immediate threat – Water Quality; Water Quantity; <i>Egeria densa</i>. 	<ul style="list-style-type: none"> Revegetation with indigenous riparian vegetation (W) Riparian wetland management Removal/replacement of exotic riparian vegetation (W) Management of aquatic weeds Management of stock impacts on waterways (W) Encourage adoption of sustainable land management practices in riparian lands (E) Manage human impacts at public recreation river access points and along foreshores (E,I,W) Water quantity / flow management (I) Water quality / nutrient management (I) Maintenance of recreational values – recreational water quality (M) Rural water quality and sediment management (P,W) Maintain existing community based environment activity (E,P) Urban water quality and sediment management (I,W)

Reach Management Recommendations – Hawkesbury River Subcatchment (freshwater)

Reach Name	Reach Description	Riparian Land Management Category	Reach Values	Reach Threats	Reach management recommendations (Planning, Education, Works, Monitoring, Institutional)
HN R2	.From start of Upper Crescent Reach downstream to Webbs Creek confluence near Wiseman’s Ferry.	Assisted Regeneration	<ul style="list-style-type: none"> • Good riparian vegetation • Wetlands of regional significance – numerous SREP 20 wetlands • Significant vegetation communities - Shale Sandstone Transition Forest; Cumberland Shale Plains Woodland; River Flat Forest • Popular recreational fishing (all reaches) • Popular motor boating (all reaches) • Popular non-motor boating (all reaches) • Popular swimming • Identified flagship species - <i>Eucalyptus elata</i> at Half Moon Farm; Sydney Coastal River Flat Forest • Significant irrigation water supply • River based tourism contributes to regional economy – water ski parks, B&B’s, tourist drives, cycling, Wiseman’s Ferry • Significant community based environment activity 	<ul style="list-style-type: none"> • Modified / engineered channel - some major localised engineering such as rock walls, boat ramps • Aquatic weed outbreaks – prone to heavy infestation of <i>Egeria densa</i> • Damaging access mostly from recreation access limited to a number of locations • Poor water quality 	<ul style="list-style-type: none"> • Manage human impacts at public recreation river access points and along foreshores (P,W) • Management of aquatic weeds • Riparian wetland management • Water quality / nutrient management (I) • Maintenance of recreational values – recreational water quality (M) • Maintain existing community environment activity (E,P)

Creeks of Community Concern: Currency Creek, Redbank Creek, Rickaby’s Creek, Howes Creek.