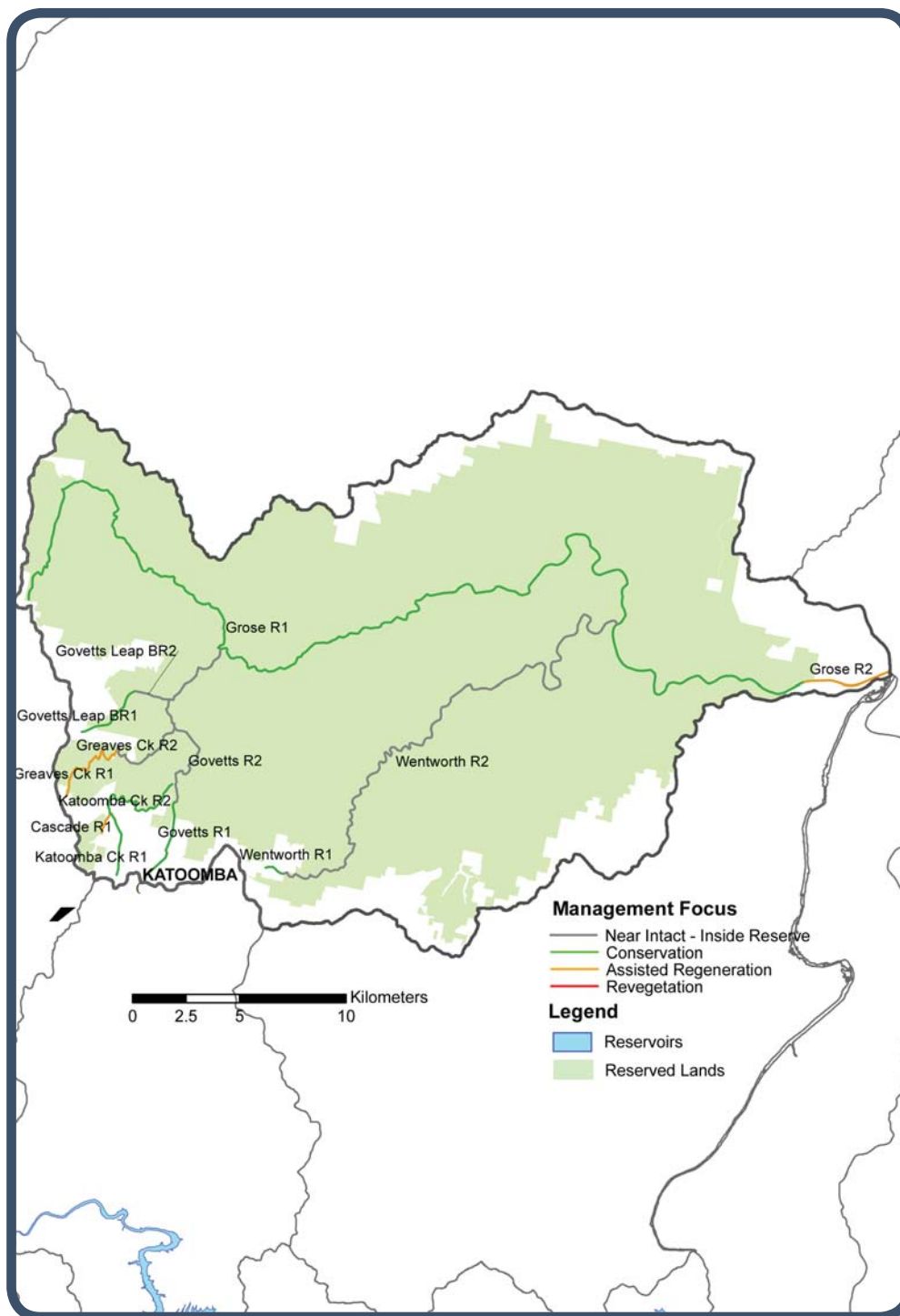


Grose River Subcatchment



Nearly all of the Grose River subcatchment is in reserved land (the Greater Blue Mountains World Heritage Area). The area is characterised by spectacular views of tall cliffs and plateaus of exposed sandstone.

Urban development is generally restricted to the areas around the townships of North Katoomba, Blackheath and Lawson. Blackheath Sewage Treatment Plant discharges effluent into Hat Hill Creek, which then feeds into the Grose River. Stormwater is contributing sediments and nutrients to the reaches, while groundwater extraction, particularly in the upper reaches, is intensive. The plateaus of the Blue Mountains contain a large number of hanging swamps, which are listed as endangered ecological communities on the relevant Australian and New South Wales Government threatened species legislation.

Grose R2 is a relatively short reach of the Grose River below the National Park that is in private ownership. This reach joins the Hawkesbury River at Yarramundi and is under threat from weeds and off-stream land use impacts.

There is a high level of community environmental activity including a Wild Plant Rescue group, many bushwalking clubs, and both Landcare and Bushcare groups undertaking weed removal programs.

Reach Management Recommendations – Grose River Subcatchment

Reach Name	Reach Description	Riparian Land Management Category	Reach Values	Reach Threats	Reach management recommendations (Planning, Education, Works, Monitoring, Institutional)
Greaves Creek R1	Headwater from Great Western Highway on easterly outskirts of Blackheath township, near Evans Lookout Rd. to National Park boundary where creek enters the Grand Canyon, just below Lake Greaves.	Assisted Regeneration	<ul style="list-style-type: none"> • Good riparian vegetation • Wetlands of regional or state significance (Montane Peatbogs) • Popular swimming • River based tourism is a major focus for regional economy • Identified flagship species (World Heritage Area) 	<ul style="list-style-type: none"> • Modified / engineered channel • Damaging access – humans • Flow regulation - drinking water dams • Water quality 	<ul style="list-style-type: none"> • Riparian wetland management (P,W) • Manage human impacts at public recreation river access points and along foreshores (E,W) • Maintenance of recreational values – recreational water quality (M) • Water quality / nutrient management (I,W) • Increase community capacity for environmental restoration (E)
Grose R1	Most of the river to confined reach that starts where the track down from Cabbage Tree lookout meets the river at Grose Wold.	Conservation			Reach in National Park
Grose R2	From Cabbage Tree lookout to Nepean River.	Assisted Regeneration	<ul style="list-style-type: none"> • Good riparian vegetation • Upstream part of reach in World Heritage Area • Popular recreational fishing • Significant vegetation community – Sydney Coastal River Flat Forest • Popular swimming • High public access – Navua Reserve, community group recreation camps • Identified flagship species • Significant community based environment activity – bushcare, River Restoration Project 	<ul style="list-style-type: none"> • Damaging access – human, Navua Reserve, golf course • Poor water quality • Pest animal damage - pigs 	<ul style="list-style-type: none"> • Some of reach in World Heritage Area. Lowest section down to confluence with Hawkesbury River is in private ownership. • Manage human impacts at public recreation river access points and along foreshores (E,W) • Maintenance of recreational values – recreational water quality (M) • Water quality / nutrient management (I) • Removal/replacement of exotic riparian vegetation (W) • Maintain existing community based environment activity (E,P) • Pest animal management in riparian zone (P,W)

Reach Management Recommendations – Grose River Subcatchment

Reach Name	Reach Description	Riparian Land Management Category	Reach Values	Reach Threats	Reach management recommendations (Planning, Education, Works, Monitoring, Institutional)
Wentworth R1	Only a small section of the headwater is outside National Park, remainder of creek in NP. Headwater from the reserve adjacent to Leura Primary school.	Conservation	<ul style="list-style-type: none"> • Good riparian vegetation • World Heritage Area • Good river condition • High geomorphic recovery potential • Identified flagship species (World Heritage Area) 	<ul style="list-style-type: none"> • Stormwater – nutrient and sediment input 	<ul style="list-style-type: none"> • Urban water quality and sediment management (P,I) • Develop conservation management agreements to protect remnant riparian vegetation (P)
Govetts R1	Headwater to Hensons Glen. Headwater in Leura township	Conservation	<ul style="list-style-type: none"> • Good riparian vegetation • Wetlands of regional or state significance (hanging swamps) • World Heritage Area • Good river condition • High geomorphic recovery potential • Popular swimming • River based tourism is a major focus for regional economy • Significant community based environment activity • Identified flagship species (World Heritage Area, Blue Mountains Water Skink) 	<ul style="list-style-type: none"> • Modified / engineered channel (small rock lined sections to address local stormwater erosion) • Damaging human access • Water quality • Urbanisation and sedimentation impacts 	<ul style="list-style-type: none"> • Aquatic habitat condition and connectivity improvement (I,W) • Manage human impacts at public recreation access points and along foreshores (E,W) • Riparian wetland management (P,W) • Urban water quality and sediment management (P,I) • Maintain existing community based environment activity (E,P) • Develop conservation management agreements to protect remnant riparian vegetation (P)
Govetts Leap BR1	Headwater from Great Western Highway in Blackheath township to National Park boundary at Govetts Leap.	Conservation	<ul style="list-style-type: none"> • Good riparian vegetation • Good river condition • Wetlands of regional or state significance (hanging swamps) • Popular swimming • River based tourism is a major focus for regional economy • Significant community based environment activity • Identified flagship species (World Heritage Area) 	<ul style="list-style-type: none"> • Modified / engineered channel (number of small dams in headwaters associated with golf course) • Water quality • Urbanisation and sedimentation impacts 	<ul style="list-style-type: none"> • Aquatic habitat condition and connectivity improvement (I,W) • Riparian wetland management (P,W) • Urban water quality and sediment management (P,I) • Maintain existing community based environment activity (E,P) • Develop conservation management agreements to protect remnant riparian vegetation (P)

Reach Management Recommendations – Grose River Subcatchments

Reach Name	Reach Description	Riparian Land Management Category	Reach Values	Reach Threats	Reach management recommendations (Planning, Education, Works, Monitoring, Institutional)
Cascade Ck R1	Headwater from Great Western Highway west of Katoomba to confluence with Katoomba Creek confluence. Includes Cascade creek Dams.	Assisted Regeneration	<ul style="list-style-type: none"> • Good riparian vegetation • Wetlands of Regional or state significance (Montane Peatlands) • Popular swimming • River based tourism is a major focus for regional economy • Identified flagship species • Town drinking water 	<ul style="list-style-type: none"> • Modified / engineered channel (localised armouring associated with stormwater outlets) • Damaging access – human • Flow regulation – drinking water dams • Water quality 	<ul style="list-style-type: none"> • Riparian wetland management (P,W) • Manage human impacts at public recreation river access points and along foreshores (E,W) • Maintenance of recreational values – recreational water quality (M) • Water quality / nutrient management (I,W) • Increase community capacity for environmental restoration (E)
Katoomba Ck R1	Headwater from Katoomba township on northern side of Great Western Highway to confluence with Cascade Creek.	Conservation	<ul style="list-style-type: none"> • Good riparian vegetation • Wetlands of regional or state significance (hanging swamps) • World Heritage Area • Good river condition • Popular swimming • High geomorphic recovery potential • River based tourism is a major focus for regional economy • Identified flagship species (World Heritage Area) 	<ul style="list-style-type: none"> • Modified / engineered channel (minor stormwater works) • Damaging access (human) • Water quality • Urbanisation 	<ul style="list-style-type: none"> • Urban water quality and sediment management (P,I) • Riparian wetland management (P,W) • Maintenance of recreational values – recreational water quality (M) • Manage human impacts at public recreation access points and along foreshores (E,W) • Develop conservation management agreements to protect remnant riparian vegetation (P)
Katoomba Ck R2	From Cascade Creek to junction with Govetts Creek	Conservation (Near Intact outside reserve)			<p>Part of reach outside National Park.</p> <ul style="list-style-type: none"> • Develop conservation management agreements to protect remnant riparian vegetation (P)

Near Intact reaches within Reserved Lands: Govetts Leap Brook R2, Govetts Creek R2, Wentworth R2, Greaves Ck R2