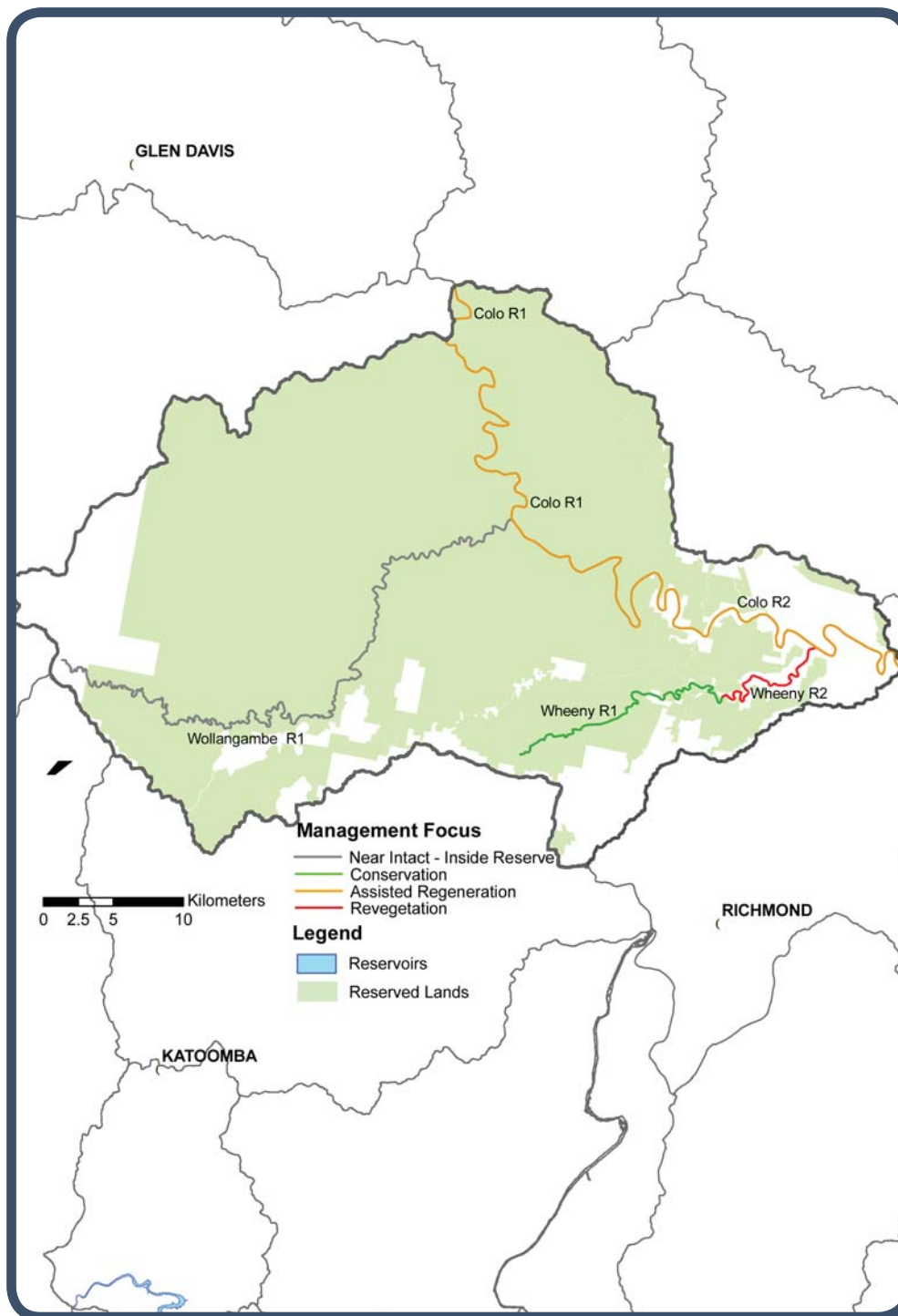


Colo River Subcatchment



The Colo River subcatchment extends from the junction of the Capertee and Wolgan Rivers in the North to the Colo River confluence with the Hawkesbury River at Lower Portland. 80% of this subcatchment is in Wollemi National Park, part of the Greater Blue Mountains World Heritage Area.

This subcatchment is characterised by deep sandstone gorges and the majority of the river reaches are in near intact condition due to the lack of disturbance. Three major subcatchments (The Capertee, Wolgan and Wollemi River subcatchments) flow into the Colo River subcatchment and these support agriculture, which is causing downstream impact in the World Heritage Area, mainly through the delivery of sediments and decreased water quality.

The Colo River is a catchment with wild and scenic values. This unique sandstone gorge is believed to be the second longest sandstone gorge on earth and its scenic beauty is world-renowned. The lower reach of the Colo River is very popular for swimming as it is one of the cleanest water sites within an hour from north western Sydney. This subcatchment is extremely important to the health of the Hawkesbury River as it supplies a significant volume of clean water to the river. There is considerable community environmental activity through the Friends of Colo group and 25 riverbank management projects underway with private landholders.

Reach Management Recommendations – Colo River Subcatchment

Reach Name	Reach Description	Riparian Land Management Category	Reach Values	Reach Threats	Reach management recommendations (Planning, Education, Works, Monitoring, Institutional)
Colo R1	Downstream of Wollemi Junction to Colo Meroo	Assisted Regeneration			Entire reach within Wollemi National Park
Colo R2	From Colo Meroo to junction with Hawkesbury River	Assisted Regeneration	<ul style="list-style-type: none"> • Good riparian vegetation • Wetlands of regional significance • Popular recreational fishing • Popular swimming • River based tourism contributes to regional economy • Significant community based environment restoration activity • Highly successful partnership between Friends of Colo community group, NPWS & Environmental Trust removing black willows • Flagship species – numbers of significant fauna species associated with this reach and adjacent World Heritage Area 	<ul style="list-style-type: none"> • Damaging access • High woody weed invasion – previously significant invasion of black willows now under active control program – ongoing monitoring and maintenance will be required 	<ul style="list-style-type: none"> • Management of stock impacts on waterways (W) • Encourage adoption of sustainable land use practices in riparian lands (P,E) • Removal/replacement of exotic riparian vegetation (W) • Riparian wetland management (P,W) • Maintain existing community based environment activity – provision of incentives (E,P) • Maintenance of recreational values – recreational water quality (M)
Wheaney R1		Conservation (Near Intact mainly within reserve)			<p>Most of reach within National Park.</p> <ul style="list-style-type: none"> • Develop conservation management agreements to protect remnant riparian vegetation (P)
Wheaney R2	From bottom of the gorge down to the confluence with the Colo River	Revegetation	<ul style="list-style-type: none"> • Wetland of regional significance (SREP 20 Wetland) • Popular recreational fishing • Rare river category (Channel wetlands) • Some community based environment activity • Identified flagship species (Diamond Python) • Popular swimming • River based tourism contributes to regional economy 	<ul style="list-style-type: none"> • Damaging access (stock in lower section of reach, particularly damaging in swampy areas) • High woody weed invasion (Bamboo, Blackberry, <i>Arundo donax</i>) • Potential acid sulfate soils 	<ul style="list-style-type: none"> • Management of stock impacts on waterways (W) • Encourage adoption of sustainable land management practices in riparian lands (E) • Removal/replacement of exotic riparian vegetation (W) • Riparian wetland management • Increase community capacity for environmental restoration (E) • Maintenance of recreational values (M) • Revegetation with indigenous riparian vegetation (W)
Wollangambe R1		Conservation (Near Intact within reserve)			Entire reach within National Park.

Creeks of Community Concern: Bowen Creek.